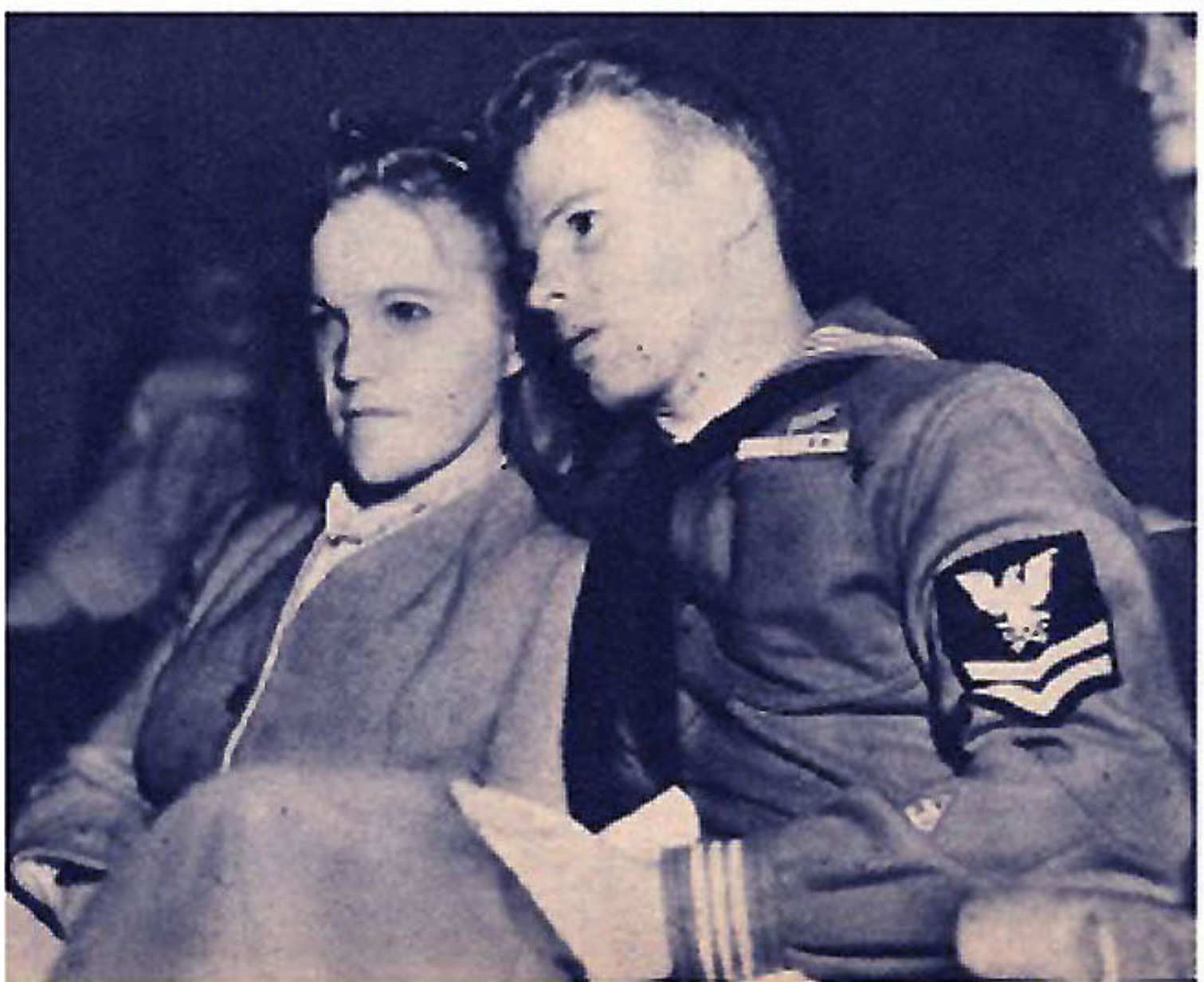


## TEARS IN THE DARK

Infrared pictures taken in a theater show how we look when we cry in the movies



GIRLS' EYES ARE WET DURING A TENDER SCENE IN THE WAR MOVIE



SAILOR WITH SERVICE RIBBONS, AND HIS GIRL, REFLECT TENSION

Development of miniature cameras with their ultra-fast lenses started the school of "candid" photography. But it remained for a New York news photographer, Ben Greenhaus, to take candid photography into a dark movie theater and there register the reactions of average Americans to sad sequences in the film. The motion picture hit he chose was *Since You Went Away* for it contains, in its three hours of showing time, many heart-rending scenes.

In New York's Capitol Theater Greenhaus stalked up and down the aisles carrying a Speed Graphic camera with synchronized "flash gun." Infrared film was used and the flash bulbs were ordinary bulbs covered with dark red paint which filters out all but the infrared rays. They give only a dim, deep red spark. But it is enough for the sensitive film.

The photographer would find a subject and then focus by guess. Sometimes it took ten minutes of careful watching before he got an interesting response. His conclusion was: "Men are just as affected by sad movies as women. Only they try to fight back the tears. You can see them swallowing when the ladies will use their hankies unashamed."



**YOUNGER CHILDREN ARE ABSORBED BY THE STORY BUT DON'T CRY**



**YOUNG GIRL IS TAUT, G. I. JOE HAS TEAR IN CORNER OF EYE  
SOME MEN HAVE COURAGE OF THEIR EMOTIONS: USE HANDKERCHIEFS**



**GIRLS OPENLY USE HANDKERCHIEFS DURING PATHETIC SEQUENCE**



**MAN MOPS FOREHEAD DURING ONE OF THE MORE TOUCHING SCENES**