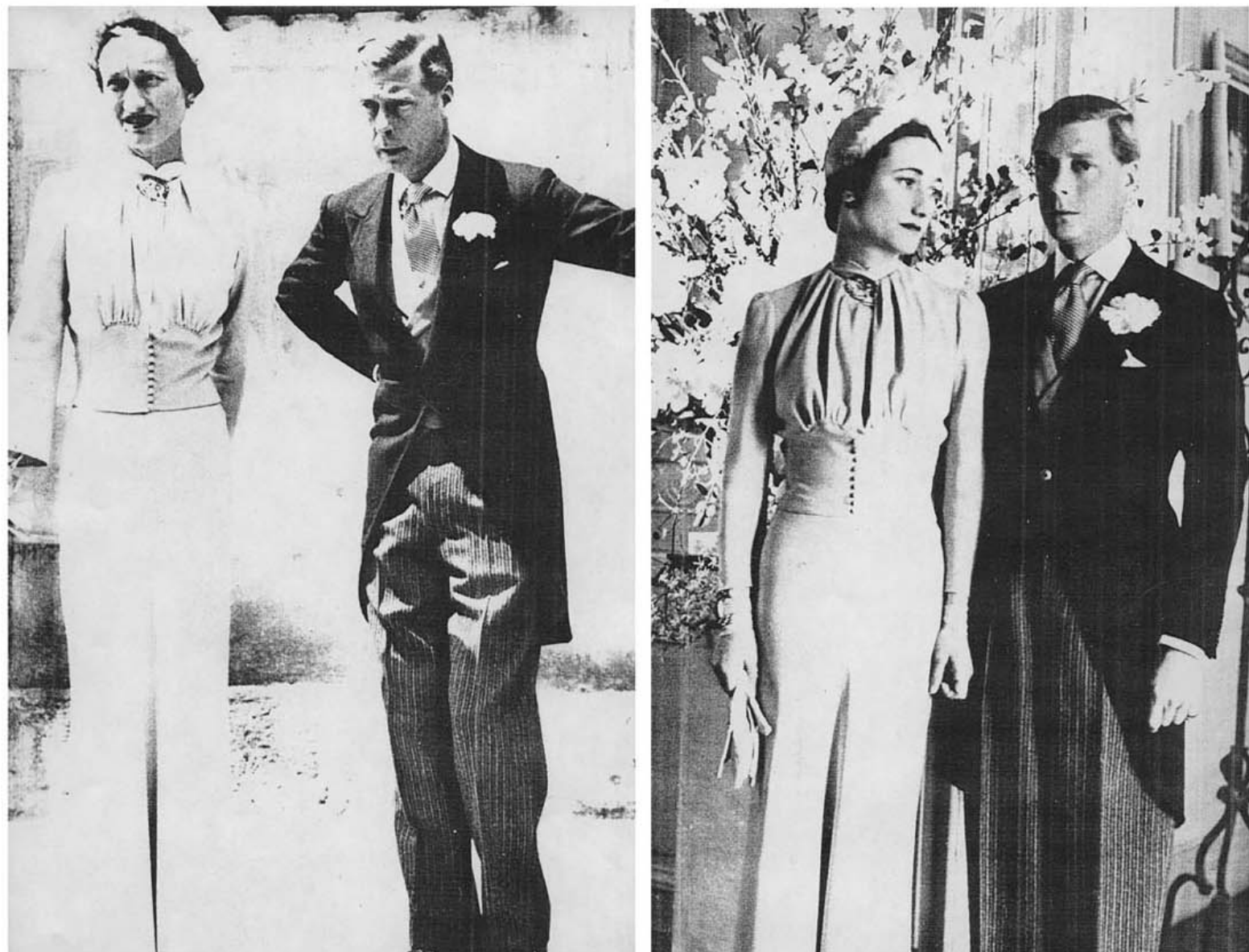


## WHAT THE NEWSREELS NEVER SHOW



*On the Left:*

**NEWSREE DISCOURTESY** The Windsors pose again for the newsreel but this time a sharp-focus lens reveals the harsh truth about the middle-aged lovers.

*On the Right:*

**NEWSREE COURTESY** This shot of the famed newlyweds of Windsor is released to admiring royal-romance fans the world over. Wally's mole and Edward's wrinkles are washed out.

**I**N chronicling the highlights of world events, the newsreels often run into incidents that they dare not put on the screen. So when the hot stuff comes in, the makeup editor gives the order to "vault it."

When Edward, now the Duke of Windsor, was Prince of Wales, he was caught by the newsreel camera tripping over a sound cable with a comic effect that would have done credit to any stage zany. The Duke is very nervous and must be checked lest he fidget with his face or clothes and produce a ludicrous effect.

Immediately after their marriage Edward and Wally posed for the newsreels. When their pictures were flashed on American screens, Wally was seen to have a large mole on the left side of her face and the Duke stood revealed with a much-wrinkled and worried countenance. The picture destroyed much of the glamor that had surrounded the seemingly-youthful pair and showed them as a middle-aged and not especially distinguished-looking couple. Instead of using a soft-focus lens that would have hidden their blemishes, the cameraman used a lens that brought them out.

The wedding pictures of Windsor and Wally made Hollywood newsreel-conscious. Mary Pickford, who wed Buddy Rogers, soon after the Duke's marriage, kept newsreel men at a distance of twenty feet during her bridal ceremony and insisted that they use soft-focus lenses. Mary hired her own cameraman to make the closeup shots.