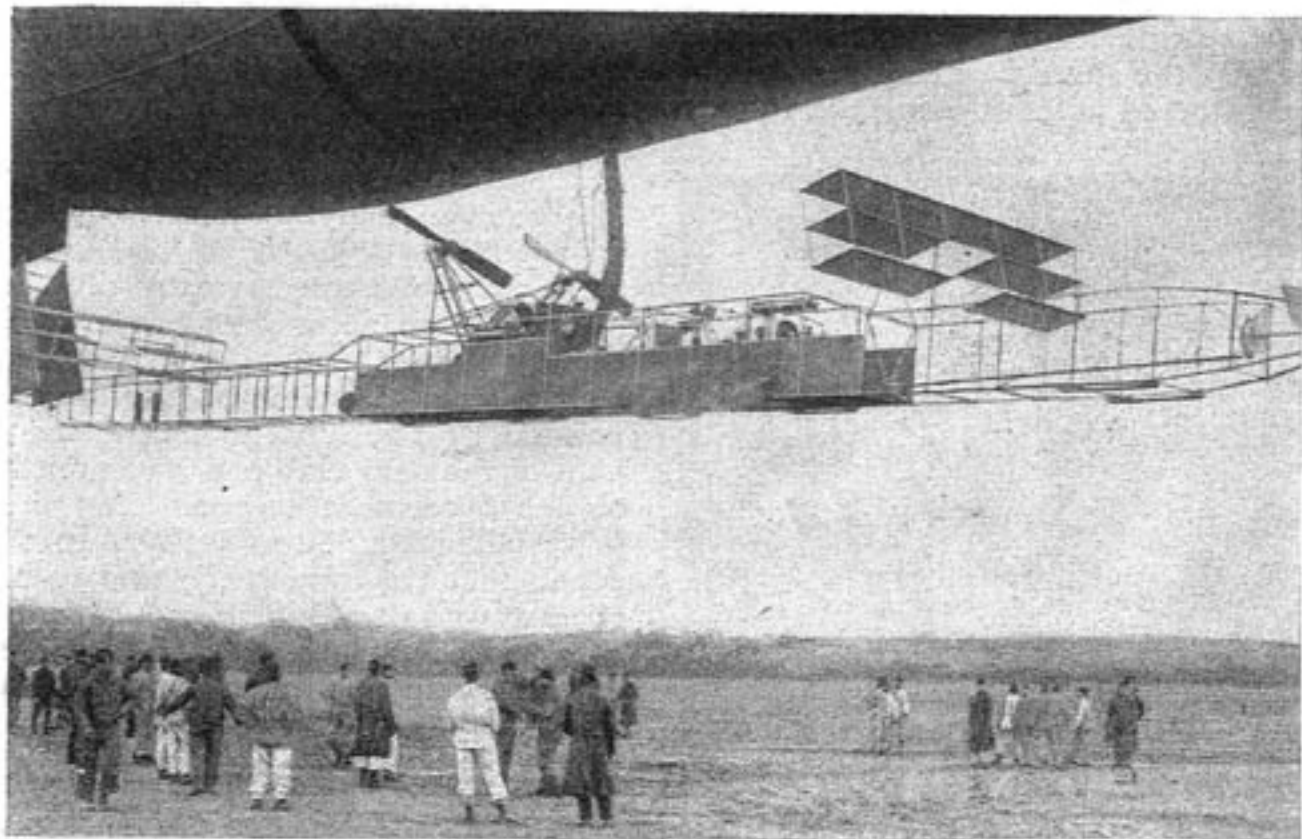


Triplanes on Dirgible Act As Elevators



COPYRIGHT, UNDERWOOD & UNDERWOOD

WHILE for years the energy of Germany has particularly been directed to the development of the rigid type of airships, notably such as the massive Zeppelins, the French have placed their faith in the flexible dirigible. The accompanying photograph shows the "Adjutant Reau" on the field as it was about to start on a flight with members of the aerial corps of the army. Although the craft has been built for several years, during which time it has made many long voyages, it has never suffered any mishap. It is 284 ft. in length and has motors which develop about 264 hp. The triplanes attached to the frame on either side of the nacelle are used as elevating surfaces.