

# Vanity Fair; 1921

## Hats Having Modernist Tendencies

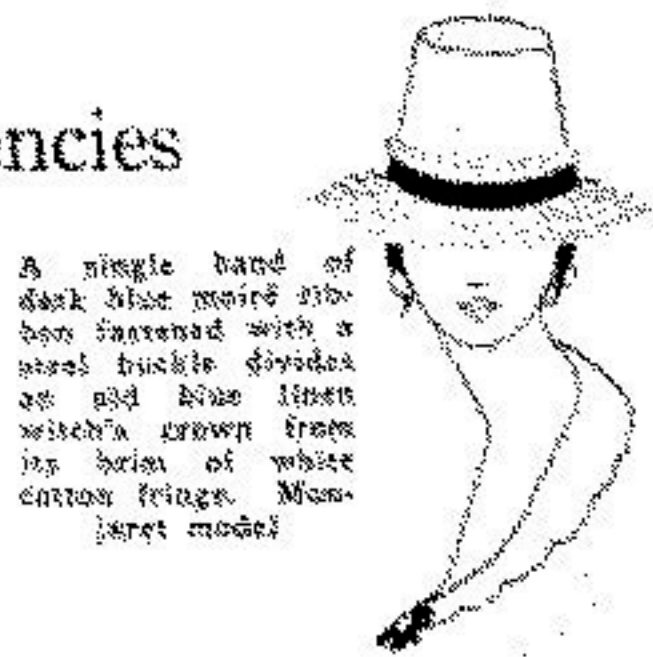


A thatched roof of Japanese straw for a crown and trim, brightly figured edge for a facing and blue satin braided cascade. Original Clairville model

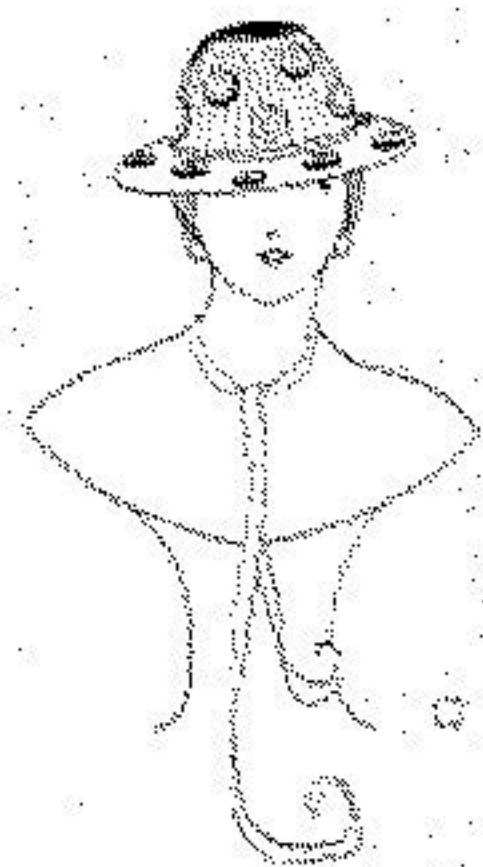
### Keeping Pace with the Procession, Hats and Wraps Grow Smarter and More Picturesque



Sports in the country shall shortly entertain this gay new type of jacket and cap made of India blue jersey cloth and designed by Lucie Hamar. The hat is knotted at the tip of the crown, tapering to a pointed end and its brim is lined with rough sea grass. The loose coat is simply provided with cuffs and collar, its only foreign trimming being two little pocket tabs of grass. All models except one at upper left imported by Clairville, Inc.



A single band of dark blue moiré ribbon fastened with a steel buckle divides an old blue linen wicker crown from its brim of white cotton fringe. Mon-jaret model



A Nonpareil model has a natural color plaited pattern crown and plain wickerwork lining dotted with shankers in washed yellow and brown



A Wedgwood green jersey cloth scarf has a chiffon lining and repeats its color. The hat, to match, is buttonholed with wavyband. Lucie Hamar model