

# fashion:

## News from Paris



**THE SPRING SHOWINGS** had a waistline for everyone and the same old 13-inch hemline. Coronation elegance and fresh-flower prettiness prevailed. Talking points: beige, hip-banded suits, flower prints, Dior's silhouette.

**DIOR'S** tulip silhouette (l.), with top interest above a tiny waist and slender stem of a skirt, gave grace to the tapered line already noted in New York collections. His other flower motifs: pocket flaps that curled like petals; tulip red, yellow, cornflower blue, other flower colors; giant flower prints.

**LESS HAIR, MORE HAT...**

with short, brushed-up coiffures and Dior's rose-shaped turban, Cleopatra pillbox (below), small square hinged sunshades and tight capelets for women who don't use their arms.

**FATH'S** flying panels (r.) look like box pleats when still—solve the silhouette problem with a skirt that's both slim and full.

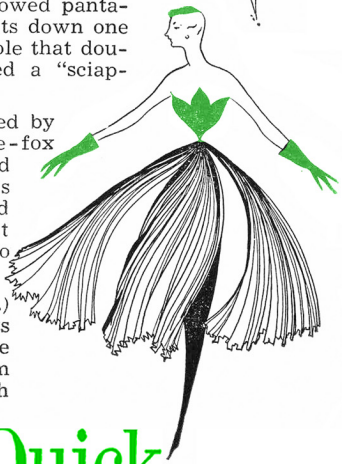
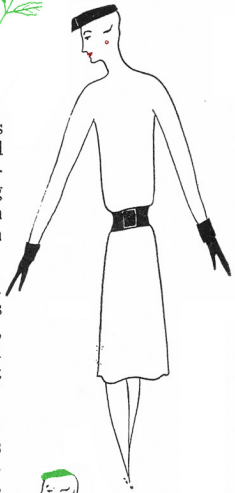
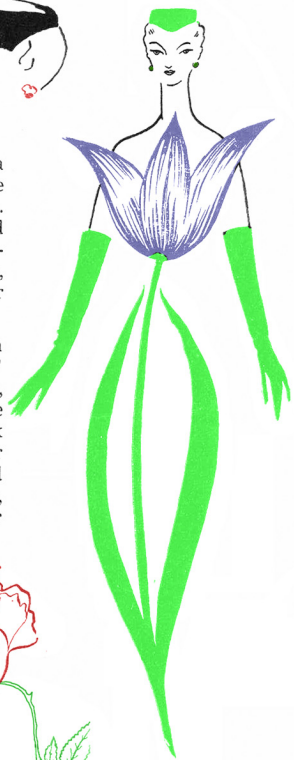
**BALENCIAGA** bloused his suit jackets slightly by banding them around the hips (r.)—continuing his away-from-the-figure trend. Following Balenciaga's lead, everyone in Paris was experimenting with barely-touching suit silhouettes.

**DE GIVENCHY** did a collection good enough to eat: realistic fruit prints—pineapples, half-peeled lemons, sliced tomatoes, even pearls sewed into an oyster print—and a bracelet of gold peanut shells.

**SCHIAPARELLI**, the woman who invented "shocking pink," now offers "crazy gray." She showed pantaloons with five pockets down one leg, a fox trimmed stole that doubles as a skirt called a "sciap-around."

**MORE FUN** was provided by Lanvin-Castillo's one-fox scarf with collar and leash... by Givenchy's small square hinged sunshades and tight capelets for women who don't use their arms.

**FATH'S** flying panels (r.) look like box pleats when still—solve the silhouette problem with a skirt that's both slim and full.



# Quick

February 23, 1953

p. 41