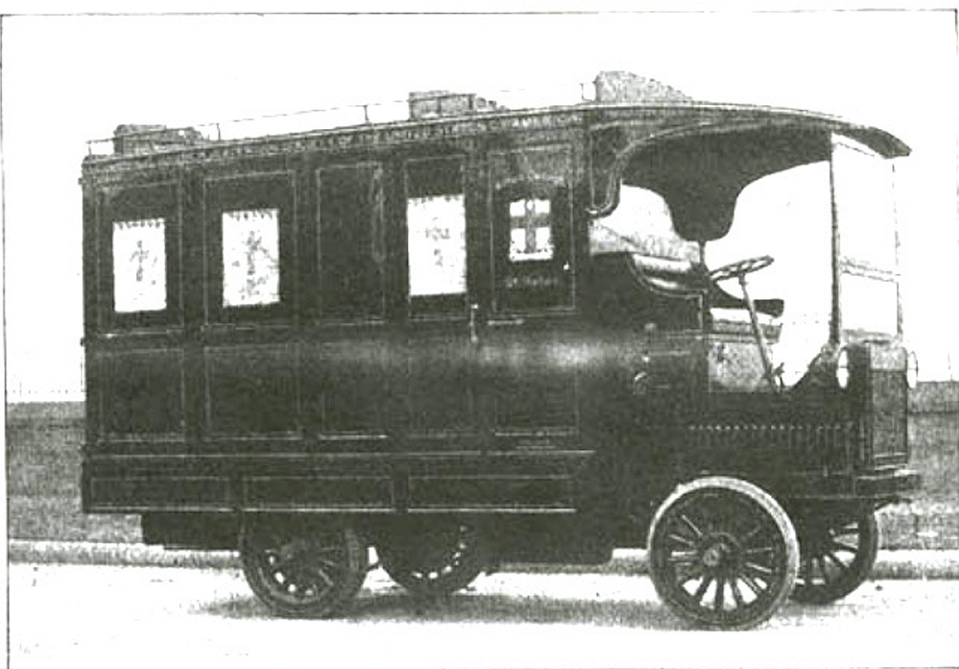
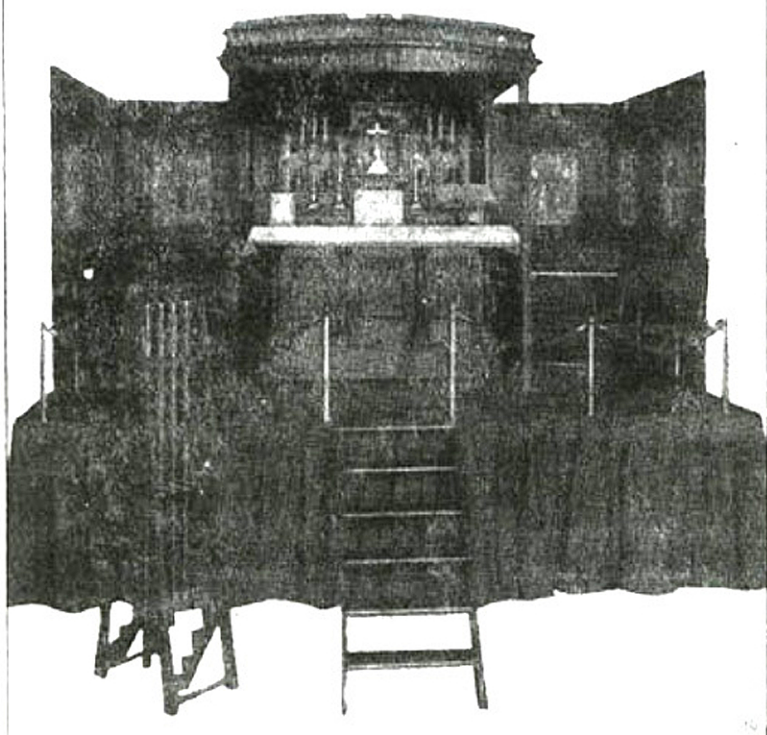


## A "MOTOR" CHURCH



A SELF-PROPELLED CHURCH.

Given to the Catholic Extension Society by the Catholic Women's Auxillary.



THE MOTOR CHAPEL INTERIOR.

Where the traveling missionary "will be able to conduct church services precisely as in the largest cathedral."

**G**OSPEL WAGONS and gospel railway-cars that carry their religious message from place to place, even boats that tie up at landings for religious service, have been seen and described. But, so far as we know, no "motor chapel" has been put into use before the one now operated by the Catholic Extension Society. It is the gift of a member of the Western branch of the Catholic Women's Auxillary, and is described by *The Catholic Citizen* (Milwaukee) as "the most completely equipped automobile 'Church on Wheels' in the world." This paper goes into these further details:

"The equipment of the motor chapel is complete in every respect, including all the paraphernalia and essentials prescribed by the rubrics of the Catholic Church. The missionary priests who will travel in this car will be able to conduct church services precisely as in the largest cathedral in the big cities, and with as much solemnity and dignity.

"The initial missionary tour of the motor chapel will be made in southern Texas, starting from Brownsville, and thence proceeding westward. Two Oblate Fathers will accompany the car.

"Along the outer edge of the platform, which by means of the drop-device is increased from the regular width of the bed of the car to 13 feet in width, are fitted demountable brass standards with heavy silk cord guards.

"The floor of the entire platform is covered with a deep green brussels carpet; and the exposed space underneath the extensions of the platform is covered the entire length and breadth with a deep green draped curtain.

"In the ecclesiastical equipment are included a folding confessional and a folding organ, as well as a folding rack equipped with large Deagan tubular bells, for outside use, and a small Deagan chime for use at the altar.

"When the altar is not in use, it is pushed to the extreme rear, and the space between the rear of the altar and the front of the car is used as living quarters.

"At night, as many as three cots can be erected in berth style. Two extra army folding-cots are included in the outfit. The chairs are of the folding style and can be put away in one of the cabinet spaces.

"The gross weight of the entire car and equipment approximates six tons. The cost of the entire motor chapel and equipment can not be duplicated for less than \$8,500."