

# LOWER YOUR BOILING POINT

By Henry L. Jackson

Your warm-weather wardrobe can combine comfort with good style for every summer occasion. Luncher at left, for example, in a double-breasted Service Blue tropical worsted suit, lightweight striped batiste shirt, striped lisle hose and lightweight black calf shoes. Hat is sennit straw, striped band. Standee: Tan Glen Urquhart tropical worsted suit, new wine-color mesh shirt, water-silk palm hat, puggree band; brown suède and calf wing-tip shoes



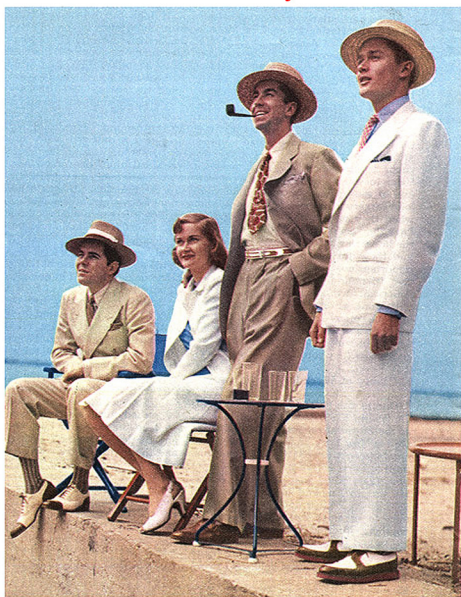
## Collier's

May 24, 1941: p. 25

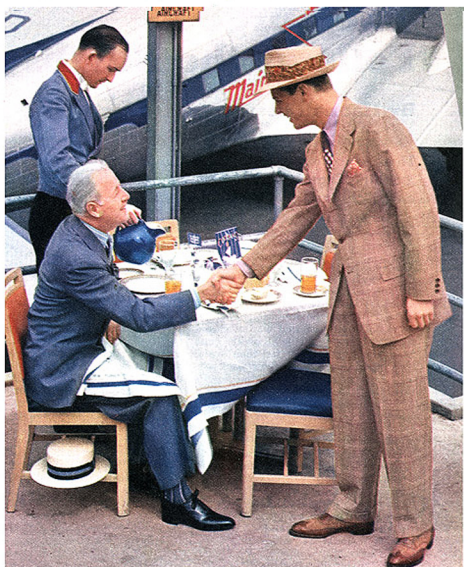
**For Dad:** 3-button tan tropical worsted, pale yellow mesh shirt, two-tone coconut hat with white polka-dot band, brown-calf monk-front shoes.  
**For Son:** Rugby stripe blazer of Palm Beach cloth, blue shorts and hose, brown-white sports shoes, crew-neck sports shirt, mesh with half sleeves

OldMagazineArticles.com

## The Summer of '41



**Vacation and resort wear, Sands Point Beach Club:** The man, double-breasted parchment-color suit, lightweight striped shirt, dyed Panama hat with club stripe band, striped silk hose, brown-and-parchment-color shoes. The girl is wearing a white Palm Beach suit. Beside her is a fan tropical worsted suit, bold charvet tie, brown monk-front shoes in moccasin style, two-tone coconut hat, coconut braid and leather belt. White outfit was popularized by the Duke of Windsor. Suit is Palm Beach; Nassau blue shirt with widespread collar; red-white check tie; pearl top Nassau coconut hat, blue band; brown-and-white Norwegian style shoes, red rubber soles



**T**HE evidence is mounting that men are not so dumb any more. This summer, for instance, you're going to see fewer cases of self-suffocation than ever. Anybody showing up at Forest Hills in July with a blue serge sack suit and a derby hat will get one long Bronx salute. The boys have been gazing with some attention at the girls and have decided they are going to have some of that summer air-conditioning. This year it's going to be lightweight suits, mesh hose, garters and suspenders, perforated shoes and porous straw hats.

In the lightweight-suit field you will find four colors for conservative business wear—blue, gray, brown and tan, available in tropical weights looking like regular winter suits. Glen plaids, white and

## *The Summer of '41*

colored stripes and a variety of checks all appear in these lighter weight suits, with Service Blue, a light gray-blue, the newest shade for business wear.

For semisports wear, in addition to tropical worsteds, there are lightweight gabardines and Palm Beach cloth. Generally in the Burma or light natural tan colors.

For week-end and vacation wear you can choose from tropical worsteds, Palm Beach cloth, rayon-and-cotton or rayon-and-worsted mixtures, tropical-weight flannels, linen, seersucker and tropical-weight tweeds looking like regular-weight tweeds.

Newest color for vacation clothes is parchment, one of the natural tan shades. Don't be afraid that you'll look like a member of the street-cleaning department in a white linen suit. Even the Duke of Windsor wears one. It is ideal for vacation wear, as the jacket may be worn with colored slacks, the trousers with other lightweight jackets.

In shirts you'll want a light shade to harmonize with your suit. Tan and pale yellows are outstanding. Paperweight cottons are cool, and inconspicuous open weaves and mesh effects add to summer comfort. They weigh about a third less than your regular business shirts. Even collars have been streamlined for comfort, with lower neckbands. Ties are made of the identical lightweight fabrics as suits; there are even wash ties that are easily and safely laundered. You'll find light yellow ground ties and bright patterns decorating many shirt fronts.

Don't make the mistake of wearing sports shoes with tropical-weight business suits. You can get lightweight shoes of black or brown, perforated for air circulation; keep your two-tone shoes and rubber-soled shoes for resort and vacation wear. New note in sports shoes is a brown-and-parchment color combination, which fits in well with tan and natural color suits.

You can get through the dog days in comfort with ankle-length cotton-mesh socks, mesh suspenders, open-weave silk or cotton belts, lightweight suspenders. Even your wrist-watch strap can be of cotton.

In summer hats you'll find that coconut straws are still great favorites; also popular are dyed Panamas, water-silk palms and Jippi Jappas, varying in color from a light natural straw shade to dark chocolate browns. The sennit straw, better known as the straw kelly, is still worn by many men for business wear.

The prices are also lightweight and this should make everybody happy, but there is one circumstance to give the well-dressed man pause. The pajamas have been abbreviated to the point where a man goes to bed in half-sleeved top and shorts. ★★★

[OldMagazineArticles.com](http://OldMagazineArticles.com)