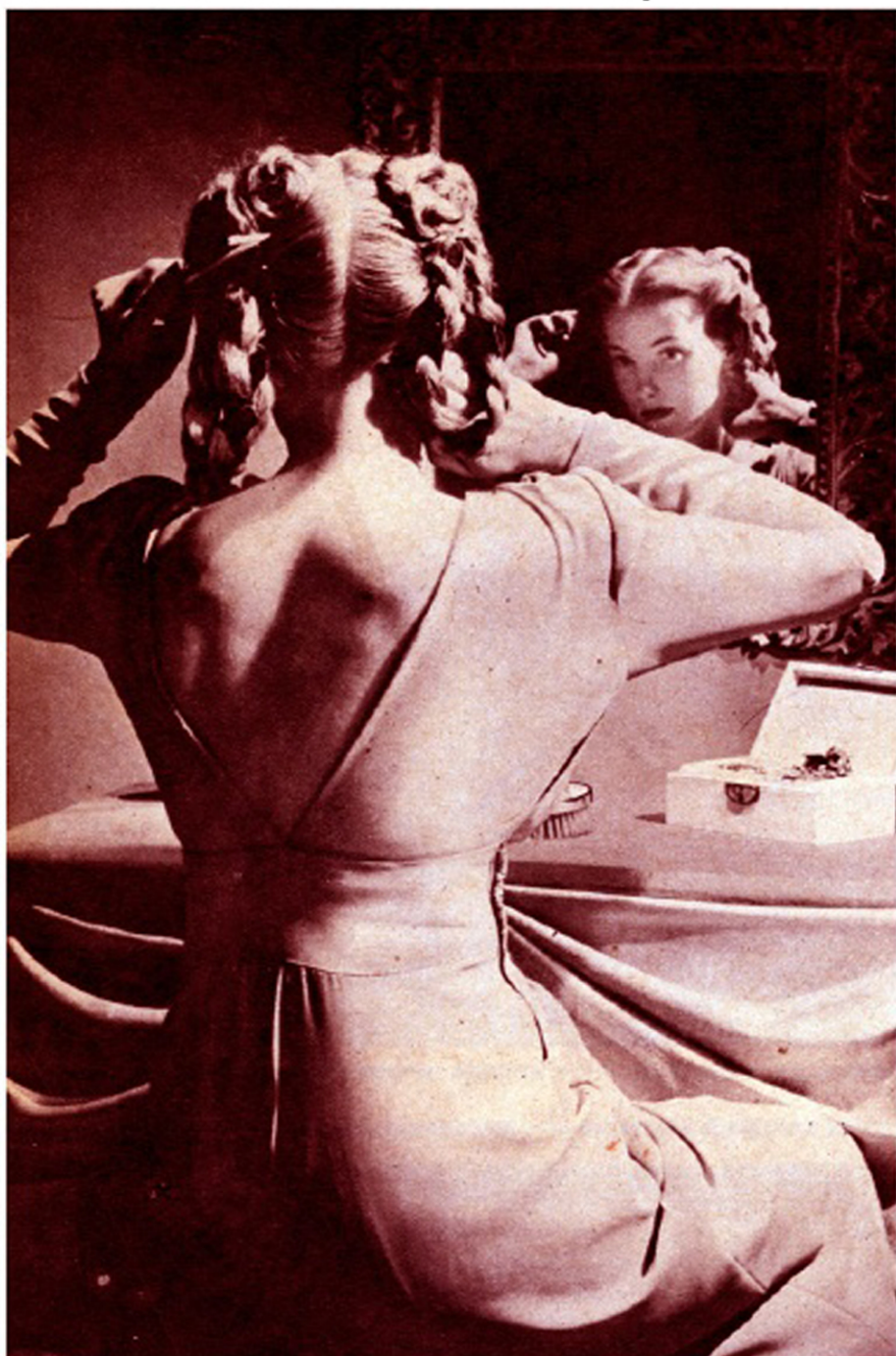


PARTS ARE BACK

The pompadour has been given the brush-off, fashionable hairdos are flat-on-top and slick



A PART DOWN THE BACK of a hairdo is best styled when it begins at the forehead and extends to the nape of neck. Loop braids add width to triangular faces.

Although a woman will have a change of hat for every flight of whimsy, she clings tenaciously to the same hairdo year after year. Many a hair stylist has turned gray contemplating this female contradiction.

Faced with the unprofitable, consistent popularity of the pompadour, hairdressers have tried repeatedly, and with little success, to get American women to abandon last year's haircomb. This winter, stylists are at it again—trying to persuade their customers to return to the parts and flat-top haircombs that were in vogue all through the twenties.

Parts are not flattering to the majority of people unless they are combed with an eye to the shape of the face and the irregularities of its features. This is the primary reason women are reluctant to adopt the fashion. To help put them over, coiffeurs are promoting the idea that hair, parted in the right place, alters and improves a person's appearance almost as effectively as plastic surgery.

Mona Manet, a make-up and coiffure specialist who operates a fashionable salon in New York's East Fifties and who also directs a beauty shop for the WAVES at Hunter College, designed the six hairdos on these pages to illustrate this idea. Miss Manet is convinced that "corrective parts" can camouflage a long nose, deep-set eyes, receding chin, badly balanced cheekbones and other facial defects.

Side and center parts have always been the most common types. Today, however, stylists are using several variations. Women with heart-shaped faces can dramatize and sharpen facial lines by parting their hair through the center. Those whose features are not too well-formed will do better to go in for the more becoming diagonal part shown on the opposite page. Similarly, round cherubic faces like the one below and left, appear leaner and longer with the help of a side part—it cuts the width of the face. Long and angular faces can be shortened or softened by a horizontal part. It's shown with the fringe of bangs below.

The exact point at which a part should start and the direction it should take will depend on the structure of your cheekbones as well as the shape of your face. There are numerous kinds of parts to choose from. The types that can do the most for you have been pictured here. If you have trouble deciding which one would suit you best, try them all or consult a good hair stylist.



A SIMPLE SIDE PART flatters a round face, particularly if cheekbones are soft, indistinct. The full page boy bob, making a comeback this winter, helps too.



THE HORIZONTAL PART is used here to produce Chinese bangs. It's becoming to angular faces. Mme. Chiang Kai-shek wore this part in Calro.



CLICK

The National Picture Monthly
Vol. 7, No. 3, August, 1944

OldMagazineArticles.com