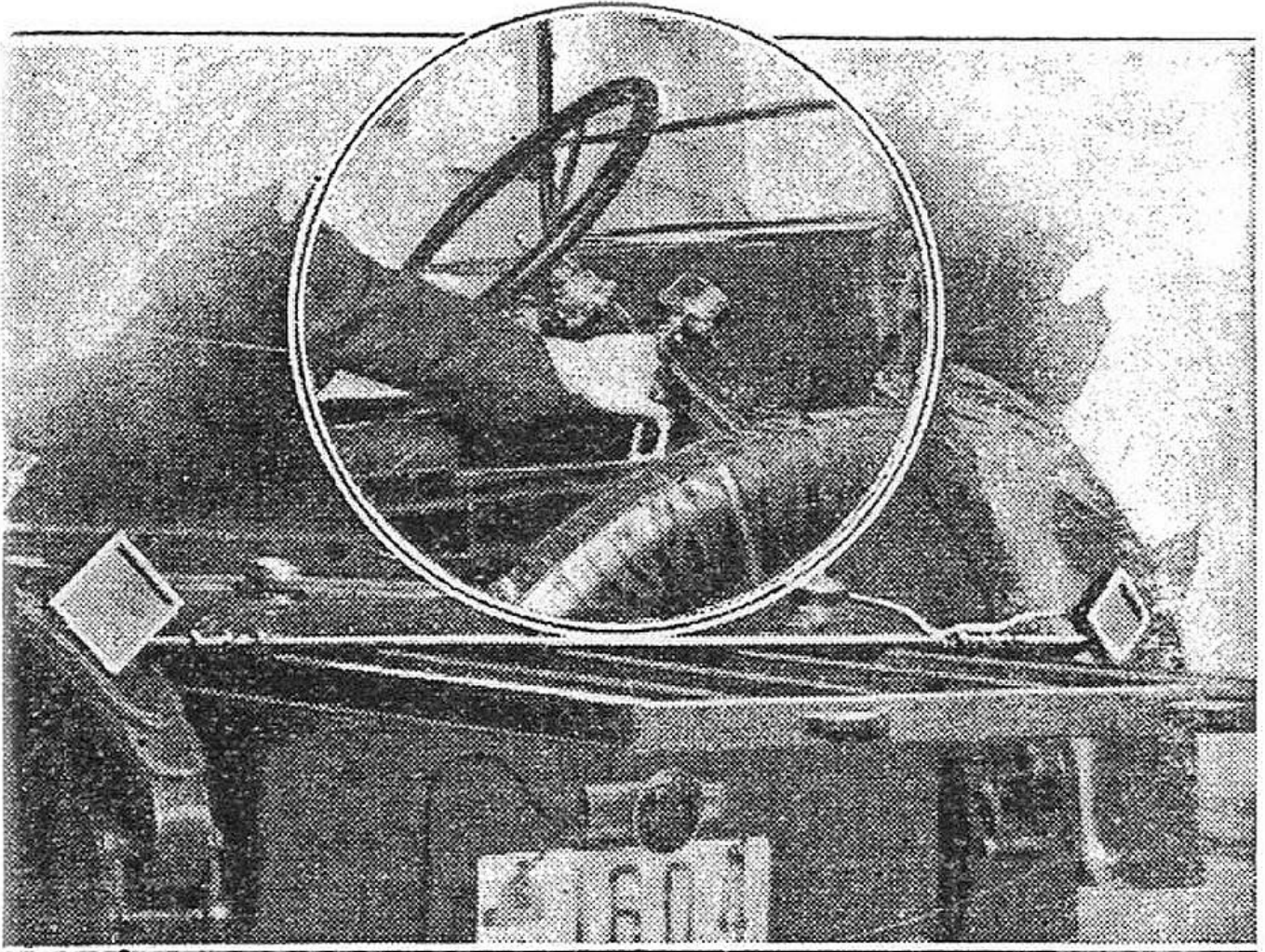


RED LIGHTS SIGNAL CAR'S STOPS & Turns



Diamond-Shaped Rear Lights Used to Indicate the Car's Stops and Turns: The Controlling Switch beneath the Steering Wheel is Shown in the Insert

A new automobile signal which is easy to install and operate consists of two diamond-shaped red lamps mounted at the rear of a car and controlled by a lever fastened to the steering column. The lamps are made so that they do not show red except when lighted, thereby avoiding any possible confusion. When a driver is about to turn he moves the switch lever in the direction of the turn, causing the lamp on that side to be illuminated. When the car is about to stop both lamps are lighted at once, by pointing the lever upward.