

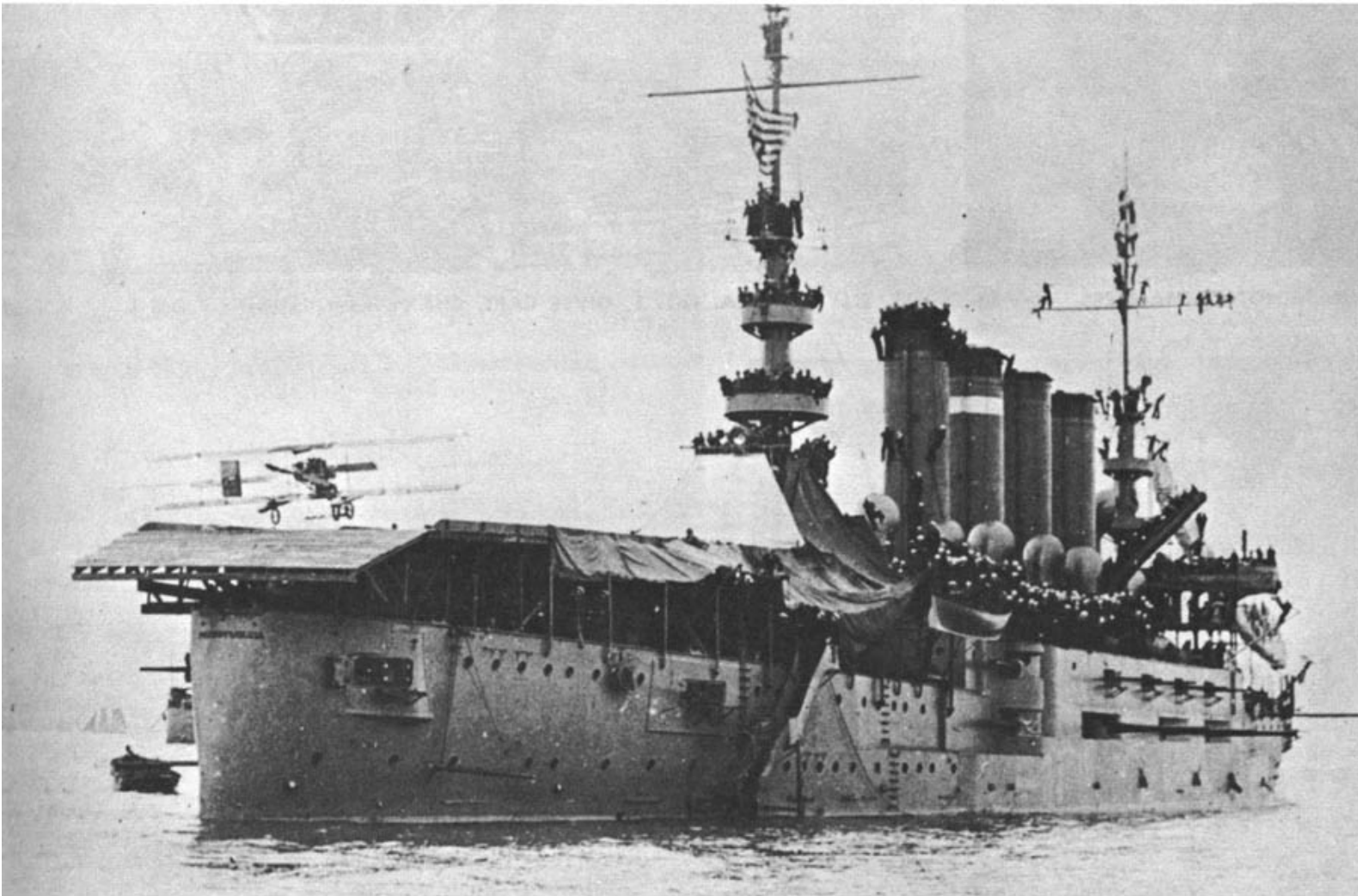
UNITED STATES NAVAL AVIATION 1910-1970

Prepared at the direction of the
DEPUTY CHIEF OF NAVAL OPERATIONS (AIR)
and the
COMMANDER, NAVAL AIR SYSTEMS COMMAND
1970

page 3

January 18, 1911

At 11:01 a.m., Eugene Ely, flying a Curtiss pusher, landed on a specially built platform aboard the armored cruiser USS *Pennsylvania* at anchor in San Francisco Bay. At 11:58 he took off and returned to Selfridge Field, San Francisco, completing the earliest demonstration of the adaptability of aircraft to shipboard operations.



ELY IN CURTISS BIPLANE COMES ABOARD THE USS PENNSYLVANIA IN THE FIRST SHIPBOARD LANDING, JAN. 18, 1911

OldMagazineArticles.com