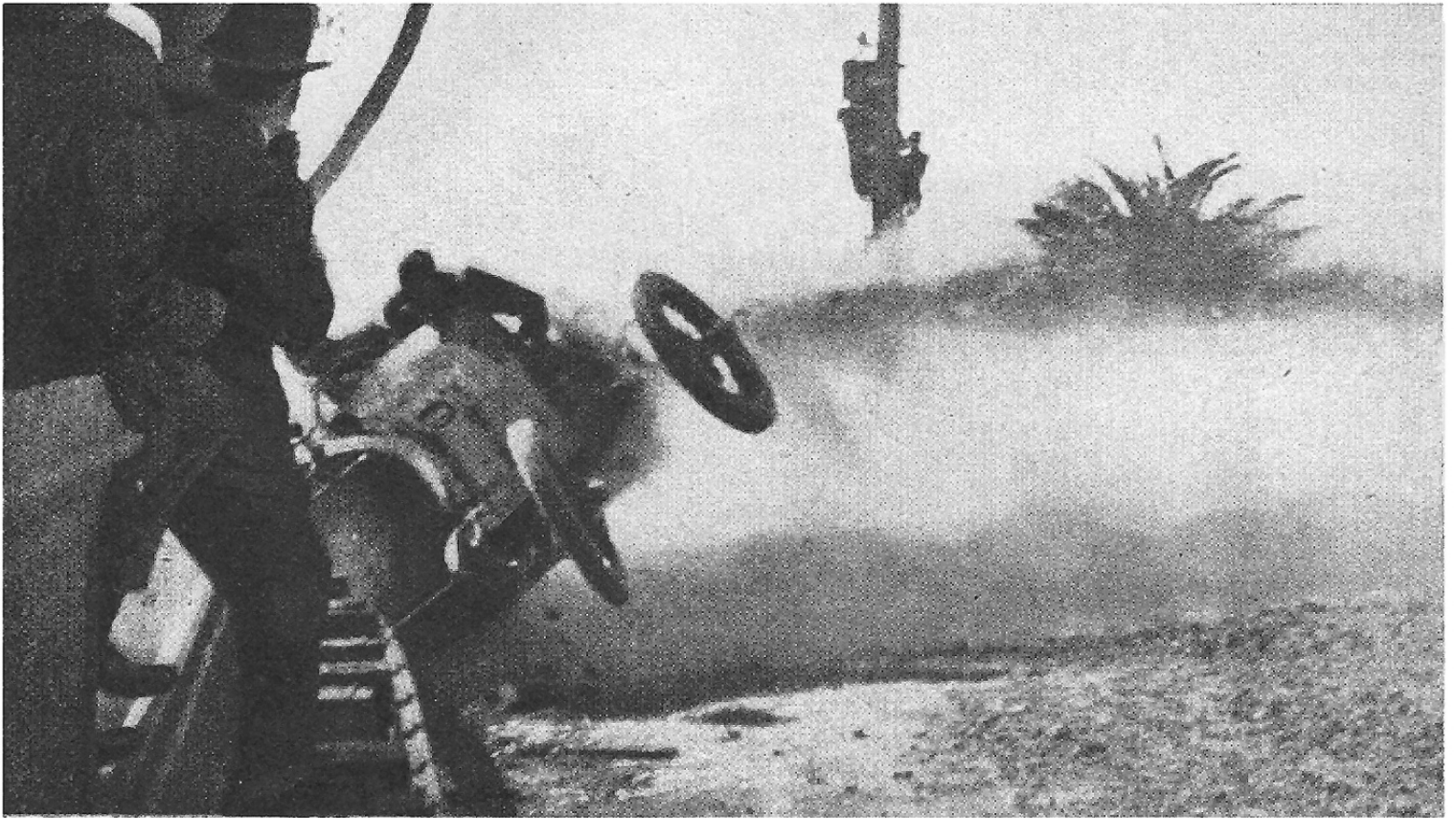


POPULAR MECHANICS
June, 1914



A Crash at the Turn on the Race Track

**REMARKABLE PHOTOGRAPH
OF AUTOMOBILE ACCIDENT**

During the race for the Vanderbilt cup at Santa Monica, recently, a car, going at the rate of 60 miles an hour, at a turn lost a wheel and crashed into the fence. A photographer, perched a few feet from the scene of the accident, pressed the button the instant before he toppled off to avoid the awful blow. That the age of miracles is not past seems to be the only explanation of the fact that neither the driver nor his mechanic were injured and the machine had only an axle broken and the radiator smashed.