

"PIC"

November 10, 1941: p. 10

GOLD AT YOUR DISPOSAL

THREE GIRLS SPEND DAY AT DRIVE-IN GOLD MINE

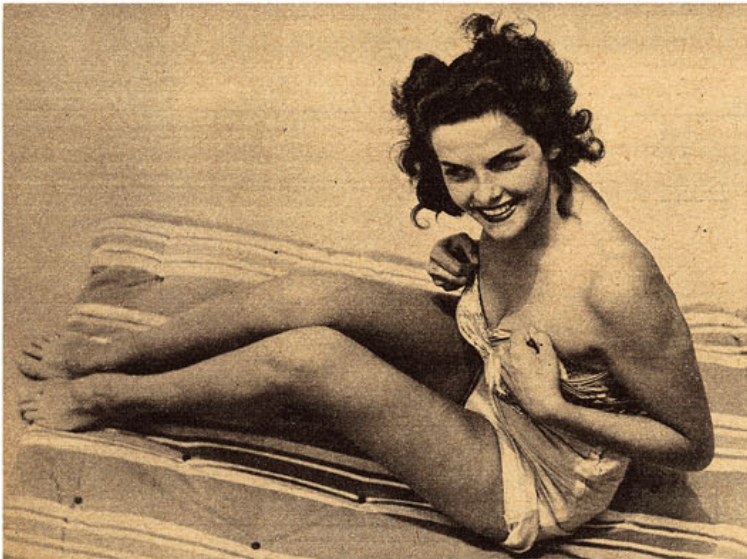
PROSPECTORS in the southern California mountains one week end last month rushed to the vicinity of Newhall, site of a "drive-in" gold mine. The attraction was glittering Jane Russell, young Hollywood beauty who is likely to become a nugget to box offices as soon as her first picture is released. Miss Russell and two friends, Patty

Durin and Lorraine Williams, had planned to spend at least one day panning gold, but there were so many other things to do that comparatively little time was devoted to the search for the precious metal. Everyone, particularly the onlookers, had a splendid time!



GOLD IS WHERE YOU FIND IT, but grizzled sourdoughs stopped looking through the silt to strain their eyes in the direction of this pretty trio when the girls went for a swim. Jane Russell, who was discovered by Howard

Hughes, makes her initial screen appearance in "The Outlaw." At her shoulder in this photo is Lorraine Williams, a dancer. The third member of the adventurous and pulchritudinous group is Patty Durin, a model.



JUST WHEN JANE BEGINS TO SHED her bathing suit to add some more tan to her beautifully bronzed body, the photographer intrudes to get this catching shot. Jane is five feet seven inches tall and weighs 125 pounds.



A BRIGHT OCTOBER MOON beckons the girls to come outside and take a short walk before putting up for the night. The drive-in mine invites visitors to "pan as you play and take the gold away" for fifty cents a day.

OldMagazineArticles.com



IT'S TIME FOR ANOTHER MEAL, AND ONCE AGAIN LORRAINE TAKES OVER THE CATERING DUTIES WHILE JANE AND PATTY LOOK ON.



TREADING TOWARD THE TREASURE of the rich mountain stream, Jane is reminded of the days—not so long ago—when she and her four brothers went barefoot around their home in Burbank. She was born in Bemidji, Minn.



A PAIR OF PRETTY PROSPECTORS are bent on bringing home a mite of precious ore, but fail to add to California's annual gold production of almost 50 million dollars. "Note the serious expression on our pans," Jane mused.

OldMagazineArticles.com

WHEN THE GIRLS FOUND a target range on a small mesa near the mine, Jane promptly took over the show with a real Western rendition of the feats of William Tell. In "The Outlaw." Jane will be co-starred with a young Texan, Jack Buettel.



OldMagazineArticles.com