

fashion:

News from Paris



THE SPRING SHOWINGS had a waistline for everyone and the same old 13-inch hemline. Coronation elegance and fresh-flower prettiness prevailed. Talking points: beige, hip-banded suits, flower prints, Dior's silhouette.

DIOR'S tulip silhouette (l.), with top interest above a tiny waist and slender stem of a skirt, gave grace to the tapered line already noted in New York collections. His other flower motifs: pocket flaps that curled like petals; tulip red, yellow, cornflower blue, other flower colors; giant flower prints.

LESS HAIR, MORE HAT...

with short, brushed-up coiffures and Dior's rose-shaped turban, Cleopatra pillbox (below).

small square hinged sunshades and tight capelets for women who don't use their arms.

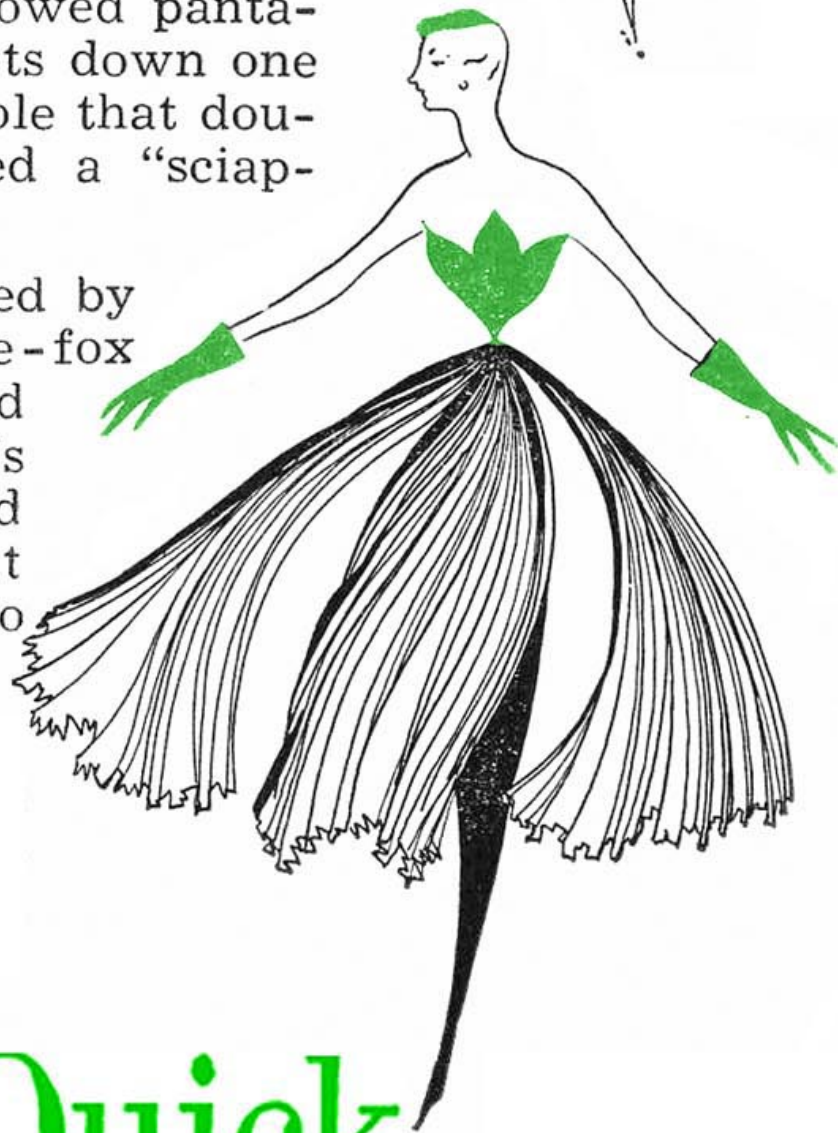
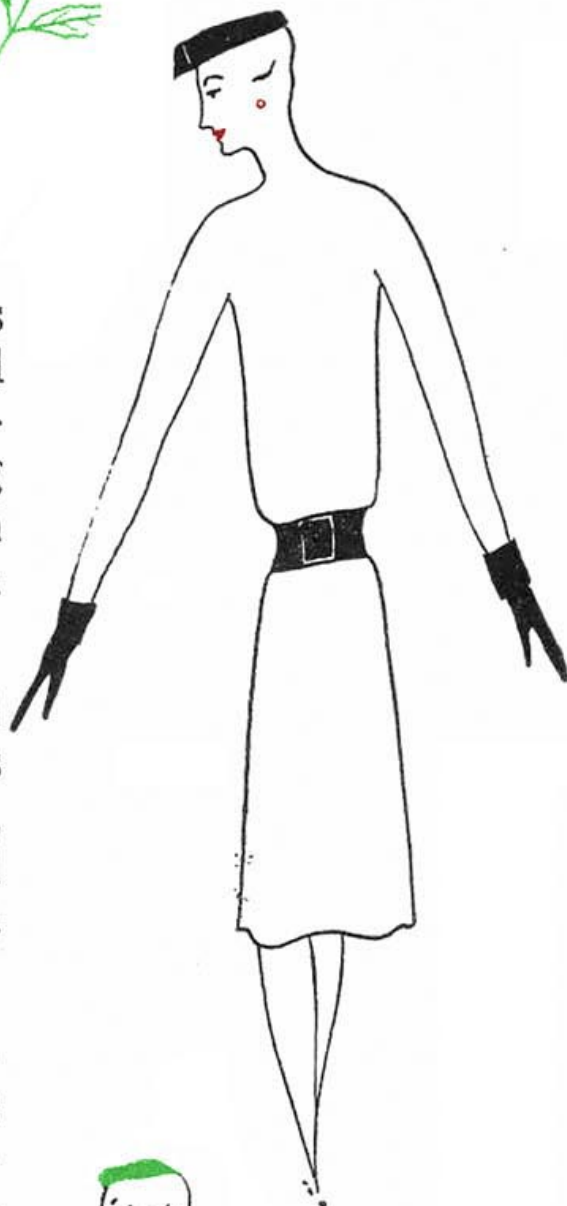
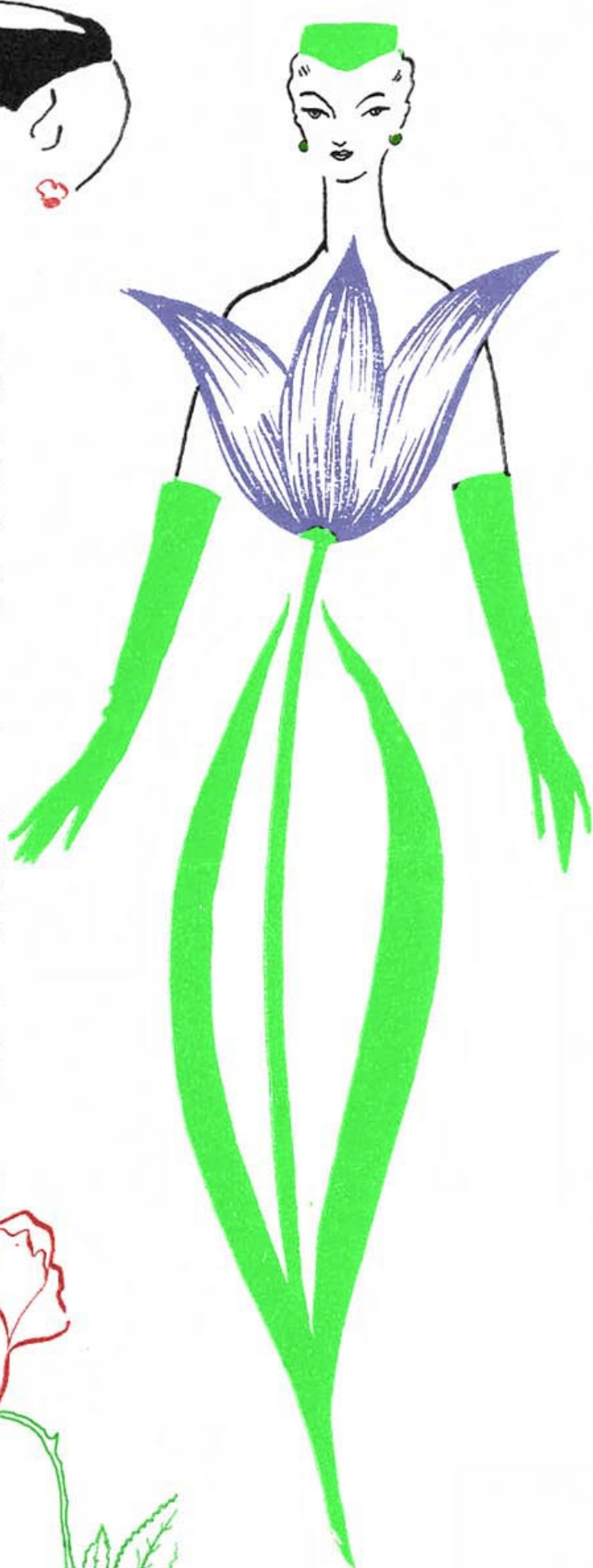
FATH'S flying panels (r.) look like box pleats when still—solve the silhouette problem with a skirt that's both slim and full.

BALENCIAGA bloused his suit jackets slightly by banding them around the hips (r.)—continuing his away-from-the-figure trend. Following Balenciaga's lead, everyone in Paris was experimenting with barely-touching suit silhouettes.

DE GIVENCHY did a collection good enough to eat: realistic fruit prints—pineapples, half-peeled lemons, sliced tomatoes, even pearls sewed into an oyster print—and a bracelet of gold peanut shells.

SCHIAPARELLI, the woman who invented "shocking pink," now offers "crazy gray." She showed pantaloons with five pockets down one leg, a fox trimmed stole that doubles as a skirt called a "sciap-around."

MORE FUN was provided by Lanvin-Castillo's one-fox scarf with collar and leash... by Givenchy's small square hinged sunshades and tight capelets for women who don't use their arms.



Quick

February 23, 1953

p. 41

OldMagazineArticles.com