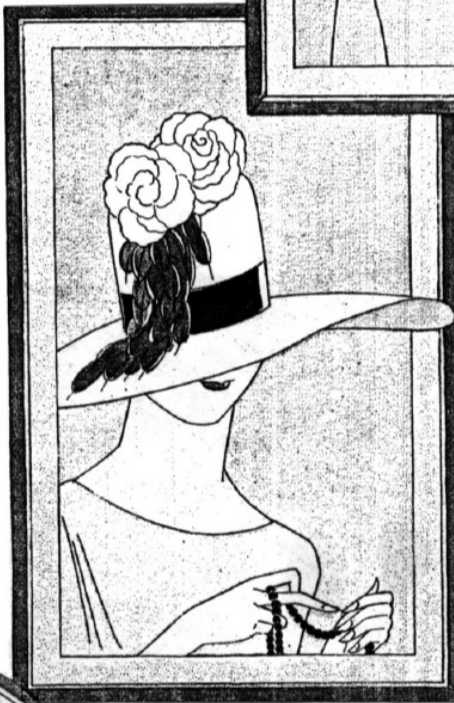


HIGH HATTING THE SPRING MODE  
IN NEW MILLINERY



**H**ATS are high in the crown, narrow in the brim, and round, pointed, flat-topped or helmet-shaped.

The small hat trimmed on top with an artichoke bow, pompoms, gardenias, roses, water lilies, violets or quills is very popular.

Hats for general wear remain head-size. The large hat is seen occasionally with afternoon gowns and will be worn with the more formal Summer frocks.

Silk, satin, Georgette, moire, duvetyn, velours, flannel, faille, bengaline, ribbon and fine kasha are used alone or with straw. The new straws are Milan, Milan hemp, straw and hair braids, bleached panama, bangkok, and cellophane cloth. Felt is very becoming and popular.

The smartest colors are black and brown, the color of an ensemble, its lining or its trimming. "High" shades of purple, fuchsia, brick, biscuit, powder blue and green are new and hydrangea pinks and blues, fuchsia, rose, ocher yellow, chair pink and pastel shades will be used for Summer hats.

The new trimmings are flowers, feather fancies, gros-grain ribbon, ornaments of crystal, marcasite or rhinestones.

In choosing a hat be sure the head size is exactly right. It must be large enough to pull well down on the head, but it must not stand away from it. Consider your height and the shape and length of your face in relation to the shape and height of the crown and the position of the trimming.

