

Vanity Fair; 1921

Hats Having Modernist Tendencies



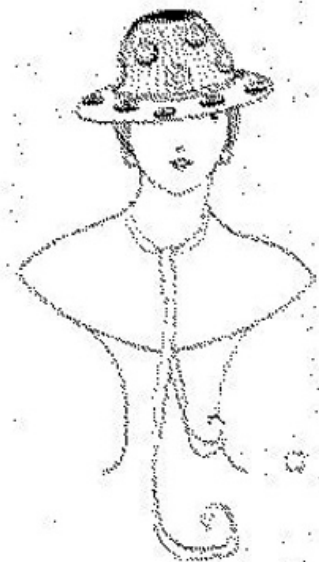
A tattered roof of Japanese straw for a crown and trim, brightly figured crepe for a facing and blue satin bristled cascade. Original. Clairville model

Keeping Pace with the Procession, Hats and Wraps Grow Smarter and More Picturesque



Sports in the country shall shortly entertain this gay new type of jacket and cap made of Jodre blue jersey cloth and designed by Lucie Hamar. The hat is knotted at the tip of the crown, tapering to a pointed end and its brim is lined with rough sea grass. The lower coat is simply provided with cuffs and collar, its only foreign trimming being two little pocket tabs of crepe. All models except one at upper left imported by Clairville, Inc.

A single band of dark blue moiré ribbon fastened with a steel buckle divided an old blue linen witch's crown from its brim of white cotton fringe. Mon-jeret model



A Moujere model has a natural color plaited passage system and plain construction. Hair dressed with chignons in wadded yellow and brown



A Wedgwood green jersey cloth scarf has a chiffon lining and repeats in repeat color. The hat, to match, is buttonholed with wavyed. Lucie Hamar model